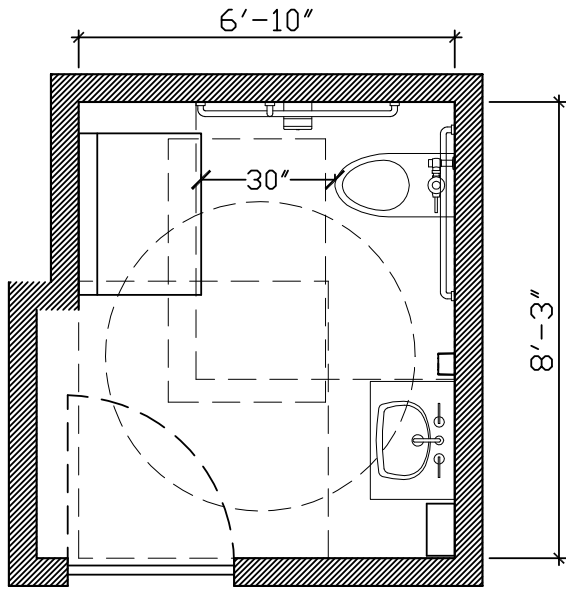
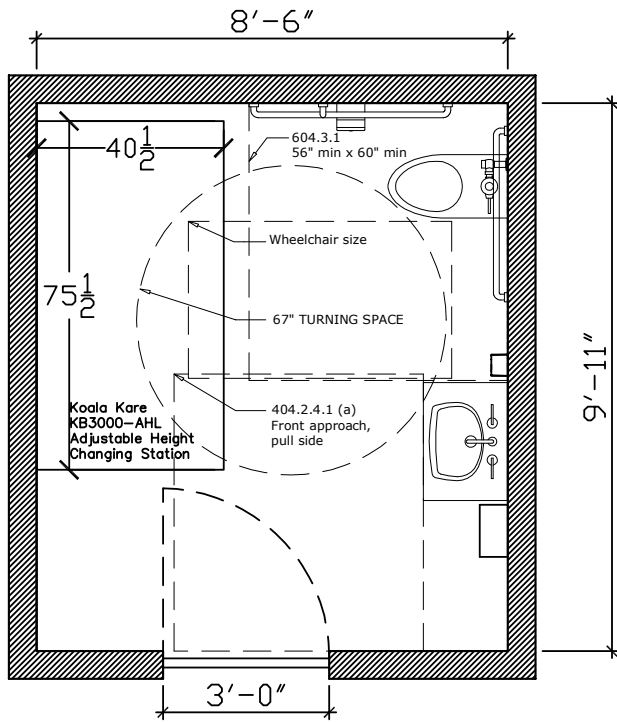


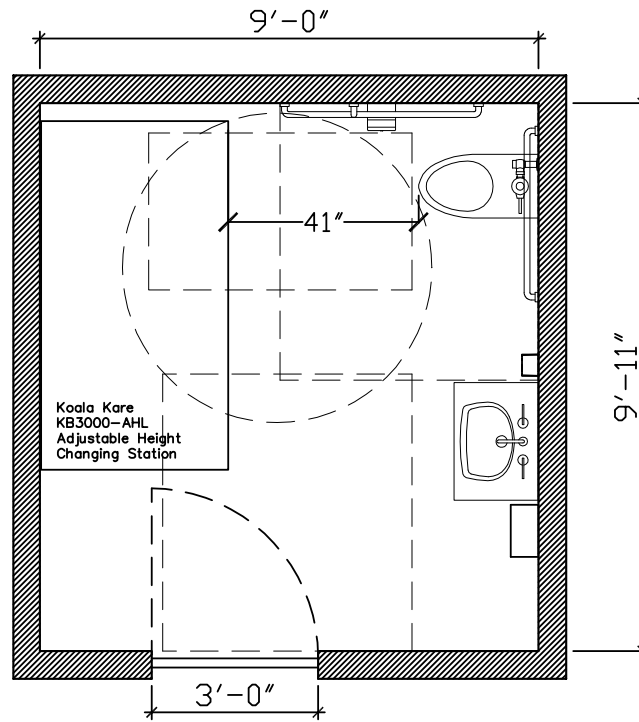
UNIVERSALLY DESIGNED CHANGING ROOM  
TO MEET NEEDS OF CHAIR BOUND PERSON  
PLUS ASSISTANT



Fully Accessible Family Restroom with Baby Changing Table  
~60 s.f.



Fully Accessible Restroom with Universal Changing Table  
85 s.f.



Fully Accessible Restroom with Universal Changing Table  
90 s.f.

UNIVERSAL CHANGING ROOM LAYOUT

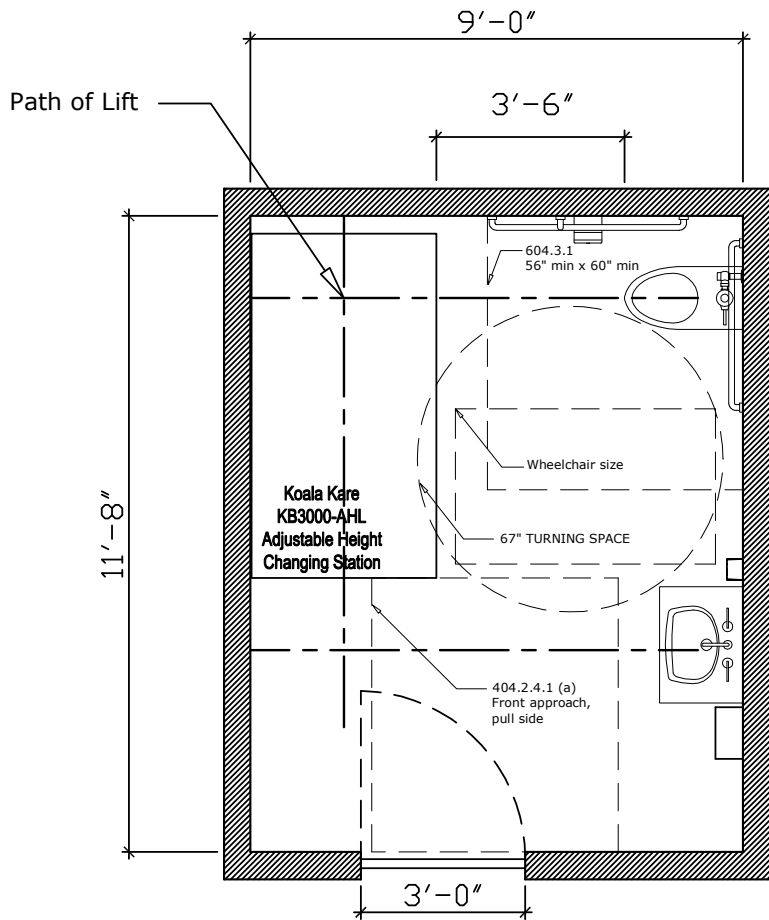
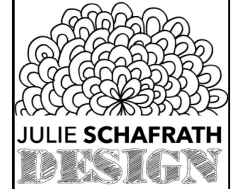
Date 11/21/23

Drawn by JAS

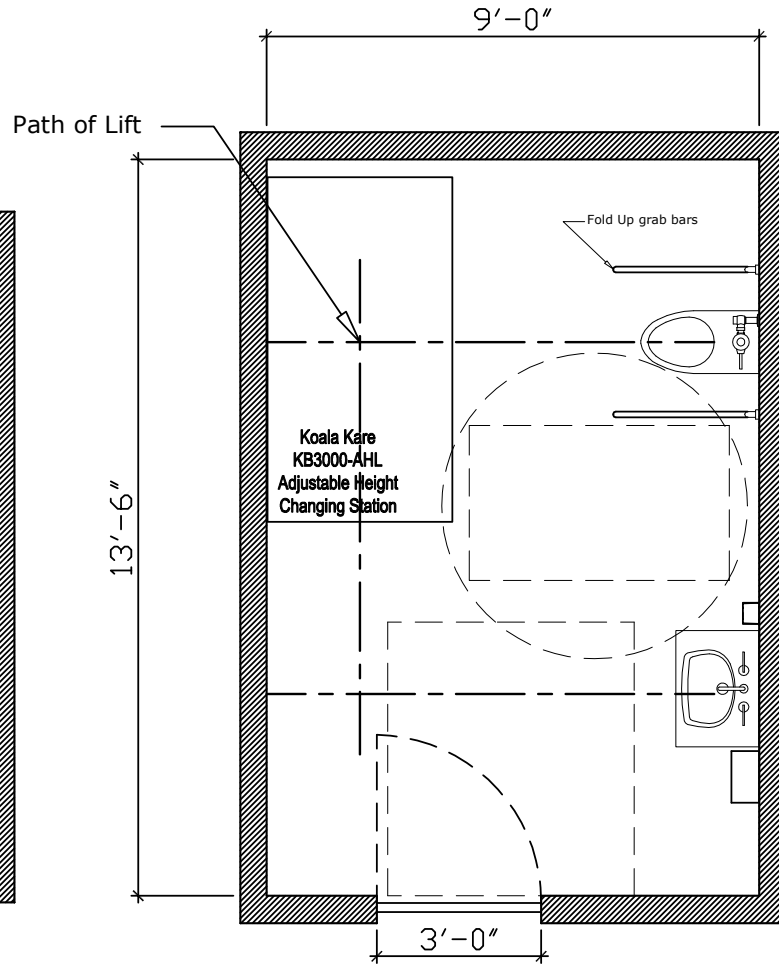
Sheet no.

1

**UNIVERSALLY DESIGNED CHANGING ROOM  
TO MEET NEEDS OF CHAIR BOUND PERSON  
PLUS ASSISTANT**



Fully Accessible Rest room with Universal Changing Table, located beyond clear floor clearance needed at door  
105 s.f.



Universal Changing Table Rest room with peninsular toilet to be used with one or more caregivers  
121 s.f.

**UNIVERSAL  
CHANGING  
ROOM  
LAYOUT**

Date 11/21/23

Drawn by JAS

Sheet no.

**2**